



NatSCA

Natural Sciences Collections Association

<http://www.natsca.org>

Biology Curators Group Newsletter

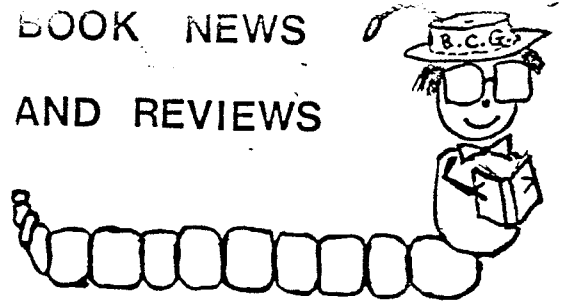
Title: Not Listed.

Author(s): Book News and Review

Source: Book News and Review (1984). Not Listed.. *Biology Curators Group Newsletter, Vol 3 No 10*, 595 - 598.

URL: <http://www.natsca.org/article/1305>

NatSCA supports open access publication as part of its mission is to promote and support natural science collections. NatSCA uses the Creative Commons Attribution License (CCAL) <http://creativecommons.org/licenses/by/2.5/> for all works we publish. Under CCAL authors retain ownership of the copyright for their article, but authors allow anyone to download, reuse, reprint, modify, distribute, and/or copy articles in NatSCA publications, so long as the original authors and source are cited.



Museum History Newsletter No 1, July 1984

A six-page newsletter containing a useful list of information sources for museums in Britain during the First World War. There are also notes on historical aspects of museums such as Bolton and Norwich. Copies are available from Gail Durbin, The HBMC Education Service, 15 Great Marlborough Street, LONDON W1V 1AF.

Also available from Gail is a Bibliography on provincial museum history drawn up by members of the seminar on the history of provincial museums held earlier this year. Price £1.

We have received copies of newsletters from Shropshire Biological Records Centre (Ludlow Museum) and Dorset Environmental Records Centre.

The spring 1984 Shropshire newsletter contains interesting details of activities in the county which include studies of Barn Owls, amphibians, butterflies, moths, hoverflies and insectivorous plants.

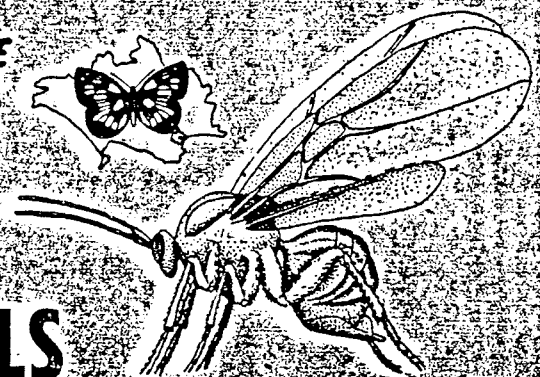
The Dorset Newsletter number 17 (April 1984) gives details of numerous ambitious projects in their county including a project to map ancient woodlands using 25 indicator, flowering plant species. There is also a project to study oak leaf galls. Both schemes are supported by excellent information sheets, including a simple, illustrated key to the galls.

Several publications, such as the forthcoming "Butterflies of Dorset" are mentioned including one very practical one; a gazeteer of Dorset place names. This contains all place names appearing on 2 1/2" maps of the county, a very important basic tool for any local records centre.

DORSET ENVIRONMENTAL RECORDS CENTRE

(incorporating Dorset Biological Records Centre)

c/o Dorset County Museum
High West Street, Dorchester
Tel. Dorchester (0305) 62735



OAK LEAF GALLS

INTRODUCTION

Plant galls are so numerous and widespread that most people will be familiar with examples of them. Although there are many different forms of gall, all are the result of a parasitic attack and represent a growth reaction of the host plant. Galls can be caused by a variety of organisms, including bacteria, fungi and insects, and affect many plants. In all cases the tissue of the gall is derived wholly from the host-plant and is linked with the reproduction of the parasite.

Some of the most well-known galls are those found on Oaks (*Quercus*) and caused by a group of insects known as gall-wasps (Superfamily: Cynipoidea). The galls can take a variety of forms and occur on many parts of the tree. However, the location and appearance of any particular gall is always characteristic of a species, and can therefore be used to identify the wasp which has initiated the gall development.

Cynipid wasps have a complex life-cycle, involving two different generations (asexual and sexual) within a single year. Female wasps emerge in the early spring or summer and lay unfertilized eggs on suitable parts of the host-plant. The eggs and their associated galls develop until the autumn, when the second generation males and females emerge. These then mate and fertilized eggs are

Below is a cover of a new series of booklets produced by Stoke-on-Trent City Museum and Art Gallery.

Prices not available in time for this issue, but contact Geoff Halfpenny for details.

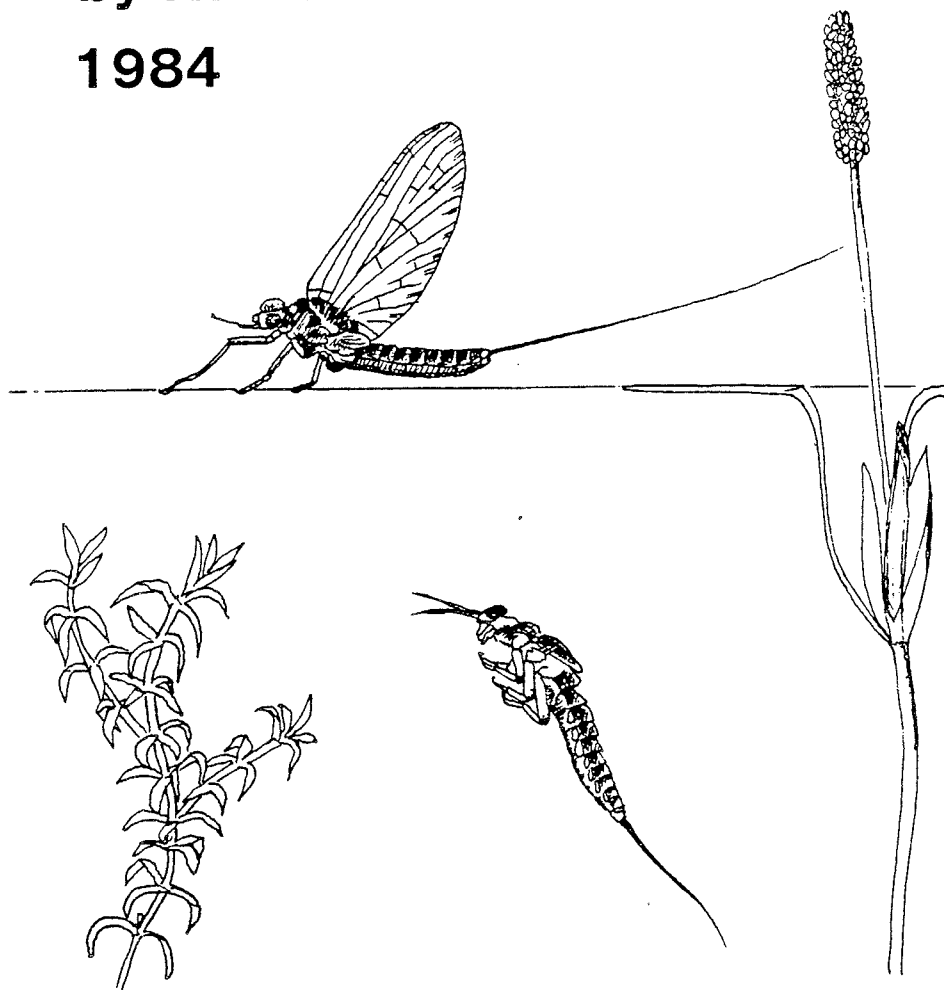
Other titles are listed on the following page...

THE WILDLIFE OF STOKE-ON-TRENT

2. FRESHWATER LIFE

by N. Bowles & C. A. Sutton

1984



City Museum and Art Gallery, Stoke-on-Trent

The Wildlife of Stoke-on-Trent

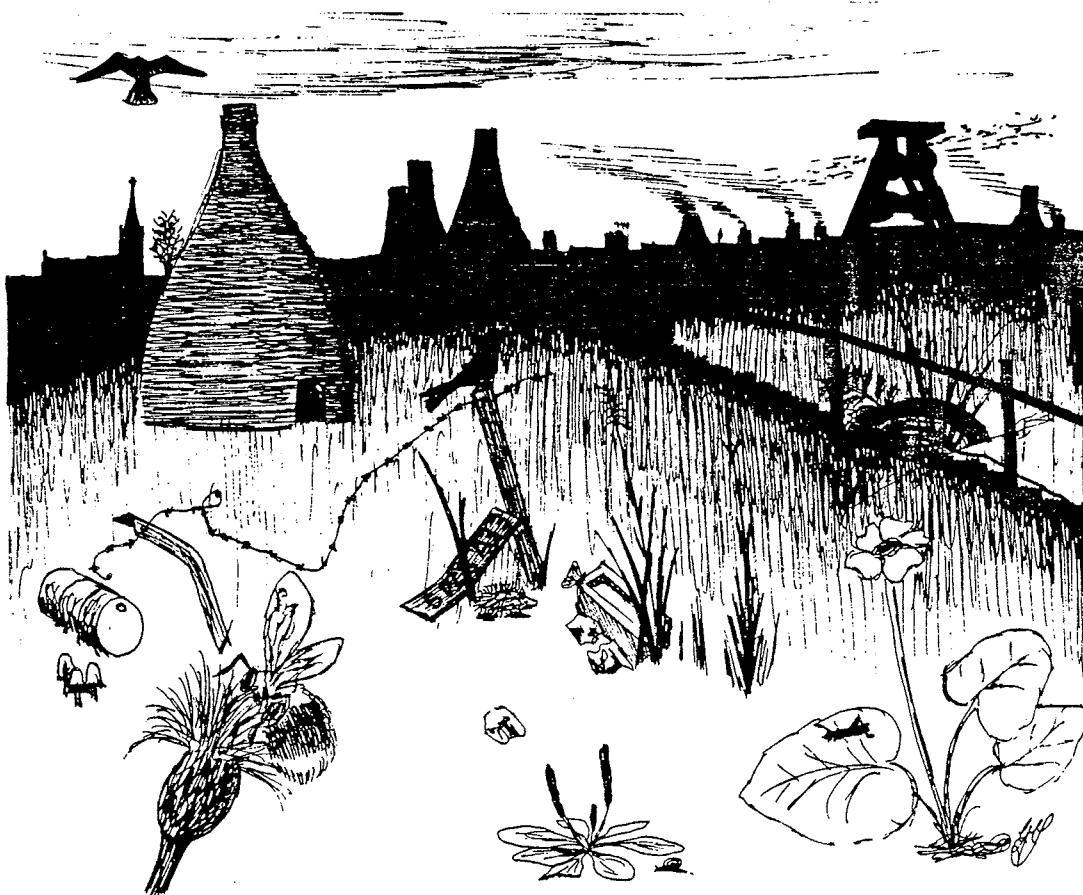
1. Introduction — Urban Wildlife
2. Freshwater Life
3. Fungi
4. Lichens
5. Plants
6. Terrestrial Invertebrates
7. Amphibians and Reptiles
8. Birds
9. Mammals

THE WILDLIFE OF STOKE-ON-TRENT

1. Introduction: URBAN WILDLIFE

by The Environmental
Survey Team

1984



City Museum and Art Gallery, Stoke-on-Trent

Curator

Members may like to know that the Journal Curator, published by the American Museum of Natural History, can be paid for by Mastercard or Visa, thus saving the cost of an overseas cheque.

The current subscription rates are:-

1 year	15.00 dollars
2 years	26.00 dollars
3 years	35.00 dollars
+	3.00 dollars per year for postage outside the USA

Subscriptions should be sent to:-

Curator Subscriptions
American Museum of Natural History
Central Park West at 79th Street
New York, NY 10024
U.S.A.

If paying by credit card, include the full account number, the type of card, the expiration date of the card and your signature.

Natural History Option Learning Goals and Bibliography

An updated version of the above is now available from the Department of Museum Studies, 105 Princess Road East, Leicester, LE1 7LG.
Price: £1.60 (plus p and p 25p)

Centres for Environmental Records

There are still a few copies left of the Report on the Conference on Environmental Records held in Leicester in 1973. Copies are available from the University of Leicester, Department of Adult Education, University Road, Leicester LE1 7RH.
Price: 75p (including p and p)