



**NatSCA**

Natural Sciences Collections Association

<http://www.natsca.org>

## The Biology Curator

---

Title: Look Out for Mammals

Author(s): Not Listed

Source: Not Listed (1996). Look Out for Mammals. *The Biology Curator*, Issue 6, 14 - 15.

URL: <http://www.natsca.org/article/517>

---

NatSCA supports open access publication as part of its mission is to promote and support natural science collections. NatSCA uses the Creative Commons Attribution License (CCAL) <http://creativecommons.org/licenses/by/2.5/> for all works we publish. Under CCAL authors retain ownership of the copyright for their article, but authors allow anyone to download, reuse, reprint, modify, distribute, and/or copy articles in NatSCA publications, so long as the original authors and source are cited.

### Why do we need *Look Out For Mammals*?

We can only protect Britain's endangered mammals if we know where they are! The problem is, they tend to be nocturnal, elusive and can be very hard to spot.

### What is *Look Out for Mammals* going to do?

To address the problems facing existing recorders LOFM will:

1. train people in how to survey, identify and record mammals
2. recruit new volunteers by running a national survey.

### ...and when?

LOFM development phase (October 1995-96) will include development of

- a simple mammal recording and mapping package
- training manuals on techniques and procedures as priorities, and also
- species surveys where mammal groups exist designed to recruit new surveyors.

LOFM training phase (October 1996-99) will:

- run mammal survey and identification workshops
- circulate the new LOFM recording package
- provide software and support to mammal recorders
- complete the UK mammal recorder network
- promote surveys of key British mammals using the newly acquired skills of volunteer mammal surveyors throughout the UK.

### Do you have inside information?

The LOFM training phase still needs funding. If you know of, or, work for a company that might fund part of this project please let us know at The Mammal Society. We are looking for match funding from another source.

# LOOK OUT FOR MAMMALS

## PUTTING MAMMALS ON THE MAP!

### A shocking statistic!

In 1995 the CCBR (Coordinating Commission for Biological Recording) reported that 65% of the biological records held in the UK are for birds whereas mammals represent only 0.5%. Imagine how many motorways, business parks and housing estates must have been planned and built in the absence of information on local mammals. *Help us do something about this.*

### What can you do?

#### 1. Start recording mammals.

1. Contact your local mammal recorder (see Current Projects on British Mammals) or, if there isn't one, contact The Mammal Society about electing one.
2. Obtain a Mammal Recording Form (from the recorder or The Mammal Society)
3. To get the ball rolling; collect and send local mammal records to your county mammal recorder
4. Encourage her/him to produce a report and identify areas which need special attention. The LOFM Recording Package will be available to help with this (funding allowing) in October.

#### 2. Form a mammal group

The job of a mammal recorder can be challenging. Why not form a local group to support her/him and promote local mammal conservation? Other members of the group could then

take charge of certain tasks such as organising events and recruiting new surveyors. Contact the Mammal Society office for a brand new (free) publication; *How to Form a Local Mammal Group*.

### The LOFM Recording Package

Software has been selected and adapted to meet the particular needs of mammal recorders for organising and reporting on mammal records and to produce maps of species distributions in the county.

### What the guinea pigs say:

Phil Richardson, Northants Mammal Recorder did a trial run on the LOFM package:

"I thought a megabyte was caused by *Canis lupus* until I used the LOFM package. Using the 'First-timers' guide I was soon putting records into the computer and printing out Northants distribution maps for my bats. The whole package is presented in a simple way, yet the results are professional - and can be integrated into national recording schemes, or with neighbouring counties. This has to be the way forward for mammal recording".



The final round of guinea pigs is already lined up; the Cambridge, Essex, York, Hampshire and Pembrokeshire mammal recorders, the Sussex Bat Group and The British Deer Society. These copies will be sent out in March.

### Anti-virus software

LOFM software sent to mammal recorders from the Mammal Society office will be squeaky clean. Sophos, a leading Data Security company based in Abingdon, donated a copy of their anti-virus software 'SWEEP' to the Mammal Society.

**SOPHOS**  
DATA SECURITY

### Surrey Mammal group inaugural meeting, 26th October 1995

Dr Pat Morris gave an enthusiastic welcome talk on how the group could run. Training events on general mammal recording and also on water voles have been organised in conjunction with LOFM. The Group hope to produce a quarterly newsletter and set up a contact list of experts in the county.

*Alison Tutt,  
Surrey Mammal Group*

### Give us your chips

Do you know of companies switching to Pentium computers with spare 386's and 486's? If you do and think they may be willing to donate spare computers to voluntary mammal recorders please let us know the company name and who to contact. Equally, if you are a county mammal recorder in need of hardware - get in touch.

Look Out for Mammals is a Mammal Society initiative funded by The People's Trust for Endangered Species, The Endangered British Mammals Fund and English Nature.

  
ENGLISH  
NATURE

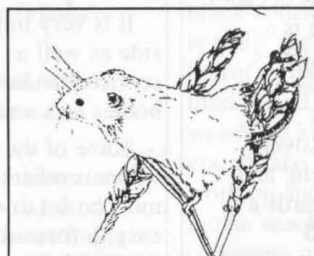
  
PEOPLE'S TRUST  
FOR ENDANGERED SPECIES



**The Mammal Society**

15 Cloisters House, 8 Battersea Park Road, London SW8 4BG

### TVMG and Surrey Mammal Groups and LOFM harvest mouse survey



*Harvest Mouse by Frankie Woods*

#### Why?

Harvest mice have been recorded from only four sites in Thames Valley and Surrey since 1990. There are suspicions that this lack of records reflects the elusive nature of Britain's smallest rodent and that it may, in fact, exist in a number of sites - we just need to look for it! Once we know where the species exists we can, if necessary, focus efforts to improve habitat management of the site.

#### How?

It has been shown that harvest mice will make use of specially adapted tennis balls as feeding sites and for shelter. Tennis balls (donated by Dunlop / Slazenger) have been adapted by cutting out a small, harvest mouse-sized hole, inserting some Trill and attaching to a bamboo stake. These nests will be set out on the site in long grass or reeds in March and checked in August for harvest mouse signs such as nests and chewed seeds inside the balls.

Any other mammal groups interested in running a similar survey? Contact The Mammal Society for posters and recording forms.

### Coming to the 1996 Mammal Society Conference?

Do you need another reason to attend the AGM instead of climbing into the bath before the conference dinner? Consider coming to hear an up to the minute report on the LOFM project, as well as having your say on the running of the Society.

### Gaps in the mammal recording network

Mammal recorders can hold a key role in local mammal conservation and yet 9 English, 9 Scottish and 4 Welsh counties do not have one. The next phase of LOFM (from November 1996) will focus on improving the recorder network and providing the necessary resources and support. Contact the Mammal Society if you would like to apply to become a mammal recorder or register an interest in advance.

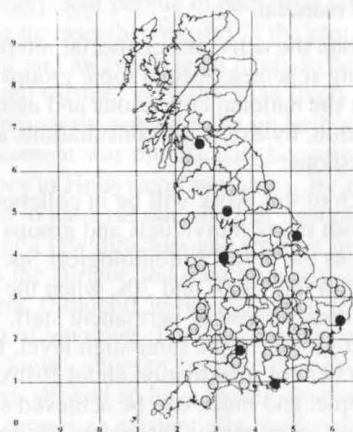


Figure 1 Distribution of county mammal recorders in Britain (darkly shaded dots show recorders that have sent The Mammal Society a county mammal atlas or report). Map produced using DMAP, written by A. Morton, which is included in the LOFM Recording Package.